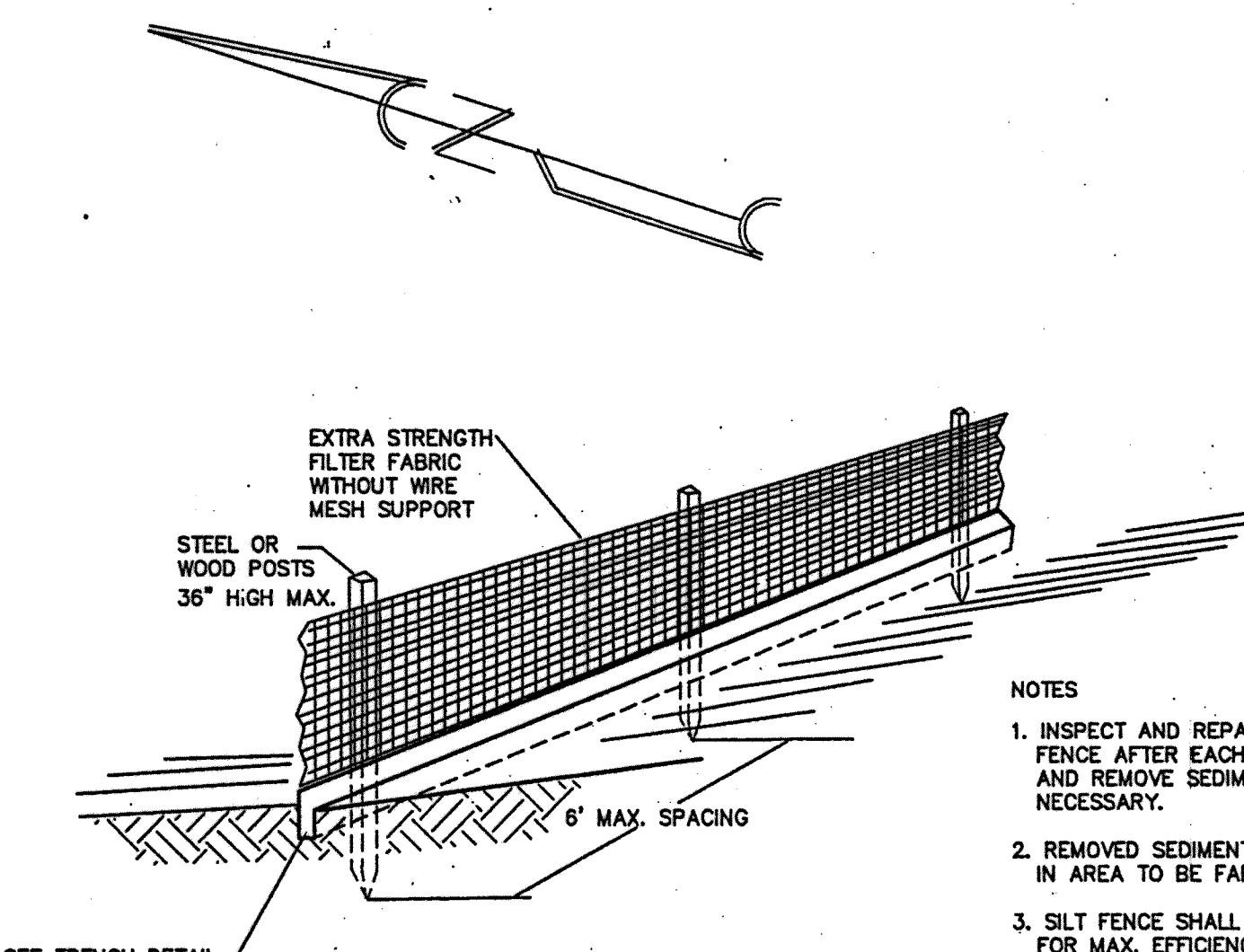
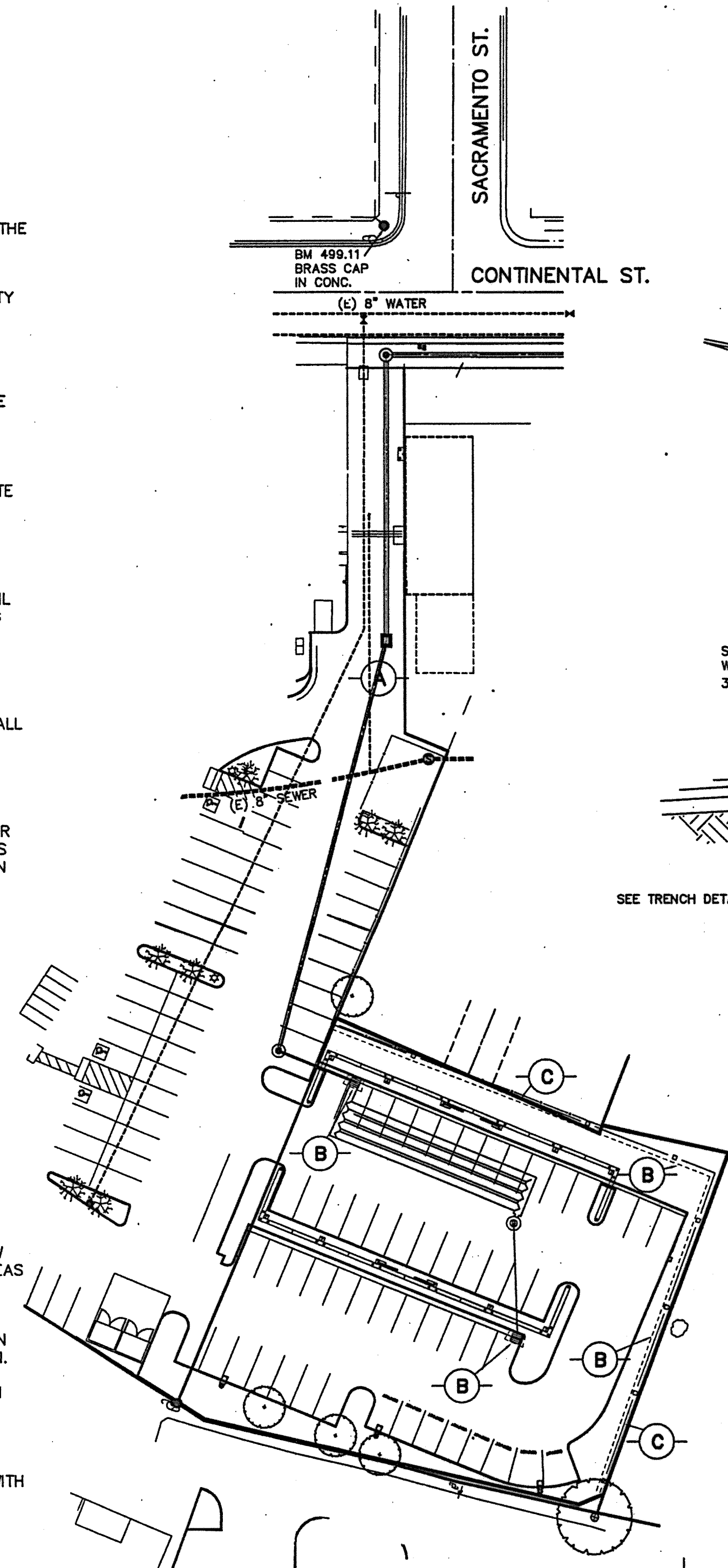


EROSION CONTROL NOTES

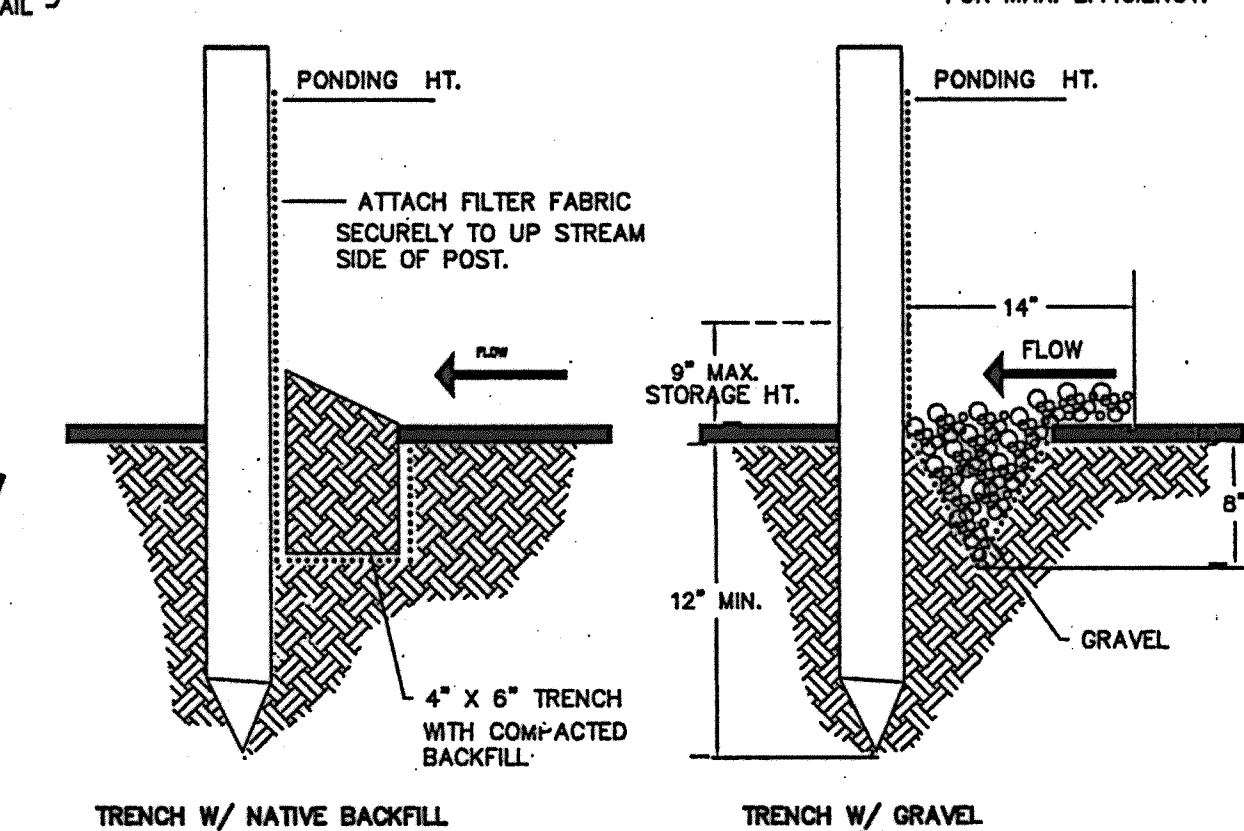
- TEMPORARY EROSION CONTROL DEVICES SHOWN HEREON, WHICH INTERFERE WITH THE WORK SHALL BE RELOCATED OR MODIFIED WHEN THE INSPECTOR SO DIRECTS AS THE WORK PROGRESSES.
- ALL LOOSE SOIL AND DEBRIS SHALL BE REMOVED FROM THE STREET AREAS UPON STARTING OPERATIONS AND NO LESS OFTEN THEN DAILY THEREAFTER. INSPECTOR MAY REQUIRE MORE FREQUENT CLEANING AS WEATHER CONDITIONS DICTATE.
- AFTER UTILITY TRENCHES ARE BACKFILLED AND COMPACTED, THE SURFACES OVER SUCH TRENCHES SHALL BE MOUNDED SLIGHTLY TO PREVENT CHANNELING OF WATER ON THE TRENCH AREA.
- EXCEPT AS OTHERWISE DIRECTED BY THE INSPECTOR, ALL DEVICES SHOWN SHALL BE IN PLACE AT THE END OF EACH WORKING DAY WHEN THE FORECAST OF RAIN PROBABILITY EXCEEDS 40% AND MAINTAINED DURING THE RAINY SEASON (OCTOBER 15 TO APRIL 30)
- ALL BASINS SHALL HAVE BEEN PUMPED DRY, AND ALL DEBRIS AND SILT REMOVED WITHIN 24 HOURS AFTER EACH STORM.
- ALL PAVED AREAS WILL BE KEPT CLEAR OF EARTHEN MATERIAL AND DEBRIS. THE SITE WILL BE MAINTAINED SO THAT SEDIMENT-LADEN RUNOFF DOES NOT ENTER THE STORM DRAINAGE SYSTEM.
- CONTRACTOR SHALL HAVE TOOLS, EQUIPMENT, AND MATERIALS TO PROVIDE EROSION CONTROL MEASURES MADE NECESSARY BY A CONSTRUCTION OPERATION, ON THE JOB SITE BEFORE BEGINNING THAT OPERATION.
- ADJACENT PROPERTIES SHALL BE PROTECTED FROM STORM WATERS, MUD, SILT, ETC. ON A DAILY BASIS.
- DUST CONTROL SHALL BE MAINTAINED AT ALL TIMES DURING CONSTRUCTION AND UNTIL FINAL COMPLETION. THE CONTRACTOR WHEN HE OR HIS SUBCONTRACTOR ARE OPERATING EQUIPMENT ON-SITE, SHALL PREVENT THE FORMATION OF ANY AIRBORN NUISANCE BY WATERING AND/OR TREATING THE SITE IF THE WORK IN SUCH A MANNER THAT WILL CONFINE DUST PARTICLES TO THE IMMEDIATE SURFACE OF THE WORK. ADDITIONAL WATERING SHALL BE PROVIDED ON DRY OR WINDY DAYS. THE CONTRACTOR WILL BE RESPONSIBLE FOR ANY DAMAGE CAUSED BY DUST FROM HIS OWN ACTIVITIES OR HIS SUBCONTRACTORS ACTIVITIES IN PERFORMING THE WORK UNDER THIS CONTRACT AND SHALL BE RESPONSIBLE FOR ANY CITATIONS, FINES, OR CHARGES RESULTING FROM DUST NUISANCE. DUST CONTROL WILL BE DONE ON A DAILY BASIS.
- MAINTAINANCE IS TO BE PERFORMED AS FOLLOWS:
 - ALL EROSION AND SEDIMENT CONTROL MEASURES SHALL BE INSPECTED DAILY, PRIOR TO AND IMMEDIATELY AFTER EACH STORM EVENT, AND AT LEAST ONCE EVERY 24-HOURS DURING AN EXTENDED STORM EVENT. EACH INSPECTION SHALL BE DOCUMENTED, KEPT ON FILE AT THE ON-SITE CONSTRUCTION OFFICE, AND BE IMMEDIATELY AVAILABLE FOR REVIEW BY INSPECTORS.
 - FIBER ROLLS, BERMS AND SWELLS ARE TO BE INSPECTED AFTER EACH STORM AND REPAIRS MADE AS NEEDED. GRAVEL BAGS PLACED AROUND THE CURB INLETS SHALL BE INSPECTED AND REPLACED IF DAMAGED.
 - SEEDED AREAS SHALL BE REPAIRED, RESEDED, AND MULCHED WITHIN 48 HOURS AFTER DAMAGE.
- ALL DISTURBED AREAS TO BE HYDROSEEDED AND MULCHED WITH TACKIFIED STRAW (2 TONS/ACRE) BY OCTOBER 1.
- DURING THE RAINY SEASON (OCTOBER 15-APRIL 30), ALL EXPOSED EARTH MUST BE STABILIZED. THIS CAN BE ACCOMPLISHED THROUGH THE APPLICATION OF TACKIFIED STRAW, HYDROSEEDING, OR OTHER ACCEPTABLE BMP.
- ANY EARTHEN MATERIAL STOCKPILED SHALL BE STABILIZED, PER NOTE 12 OF THIS SHEET. FIBER ROLLS SHALL BE PLACED AT THE BASE, FULLY ENCLOSING THE PERIMETER OF THE STOCKPILE.
- ALL COMPLETED GRADED AREAS SHALL BE STABILIZED UPON COMPLETION WITH STRAW WATTLES, PERMANENT LANDSCAPING, OR OTHERWISE AS SHOWN ON THE PLANS. ALL AREAS BEING ACTIVELY GRADED WILL BE PROTECTED BY PERIMETER PROTECTION CONSISTING OF STRAW WATTLES AT A MINIMUM.
- THIS PLAN IS TO BE USED FOR EROSION CONTROL ONLY. OTHER INFORMATION SHOWN HEREIN MAY NOT BE MOST CURRENT. SEE IMPROVEMENT PLANS FOR OTHER INFORMATION.
- THIS PLAN MAY NOT COVER ALL THE SITUATIONS THAT ARISE DURING CONSTRUCTION DUE TO CHANGING FIELD CONDITIONS. VARIATIONS MAY BE MADE TO THE PLAN IN THE FIELD SUBJECT TO THE APPROVAL OF THE DIRECTOR OF PUBLIC WORKS/ COUNTY ENGINEER.
- CONTRACTOR TO EMPLOY BEST MANAGEMENT PRACTICES (BMP'S), IN ACCORDANCE WITH CALIFORNIA STORMWATER QUALITY ASSOCIATION (CASQA) LATEST RECOMMENDATIONS.
- STORE, HANDLE AND DISPOSE OF CONSTRUCTION MATERIALS AND WASTES SO AS TO PREVENT THEIR ENTRY TO THE STORM DRAIN SYSTEM. CONTRACTOR MUST NOT ALLOW CONCRETE, WASH WATERS, SLURRIES, PAINT OR OTHER MATERIALS TO ENTER CATCH BASINS OR TO ENTER SITE RUNOFF.
- USE FILTRATION OR OTHER MEASURES TO REMOVE SEDIMENTS FROM DE WATERING EFFLUENT.
- NO CLEANING, FUELING, OR MAINTAINING VEHICLES ON SITE SHALL BE PERMITTED TO ALLOW DELETERIOUS MATERIALS FROM ENTERING CATCH BASINS OR TO ENTER SITE RUNOFF.
- USE OF PESTICIDES AND/OR FERTILIZERS SHALL BE APPLIED AND CONTROLLED TO PREVENT POLLUTION RUNOFF.
- PLACE ADDITIONAL WATTLES AS NECESSARY DEPENDING UPON SLOPE STEEPNESS.
- CONTRACTOR MAY RELOCATE STORAGE, DELIVERY, OR WASH OUT AREAS TO SUIT THEIR OPERATIONS UPON APPROVAL BY THE COUNTY ENGINEER.
- REFUSE, EQUIPMENT/ VEHICLE, HAZARDOUS MATERIALS AND MATERIAL DELIVERY STORAGE AREAS SHALL BE SURROUNDED BY SECONDARY CONTAINMENT PER BMP CA-10 CONTAINED WITHIN THE STORM WATER POLLUTION PREVENTION PLAN FOR THIS PROJECT.

HYDROSEEDING SPECIFICATIONS

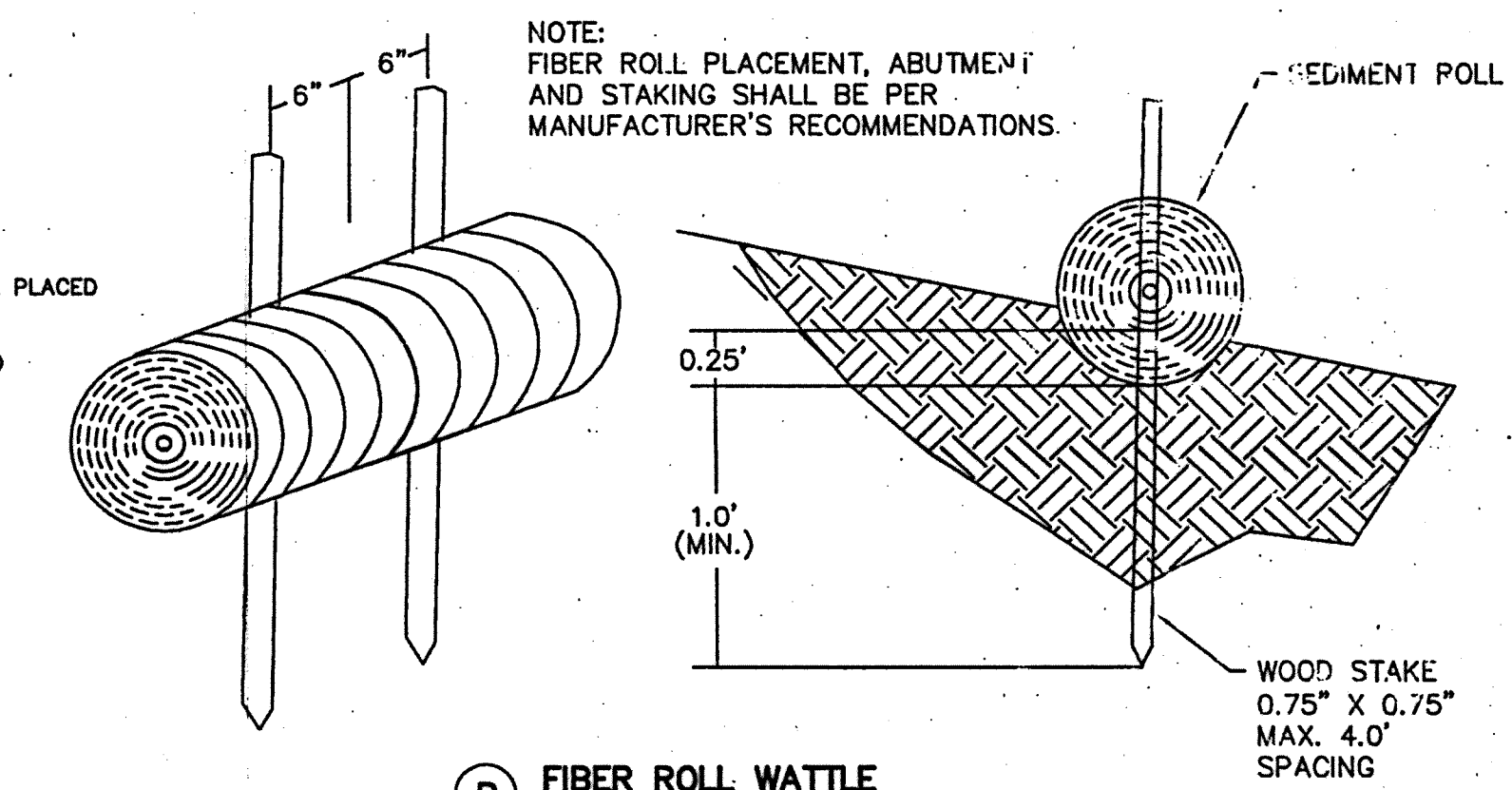
- SEED AND MULCH WILL BE APPLIED BY OCTOBER 1 TO ALL DISTURBED SLOPES STEEPER THAN 5% AND HIGHER THAN 3 FEET, AND TO ALL CUT AND FILL SLOPES WITHIN OR ADJACENT TO PUBLIC RIGHTS-OF-WAY AS DIRECTED BY THE DIRECTOR OF PUBLIC WORKS.
- SEED AND FERTILIZER WILL BE APPLIED HYDRAULICALLY.



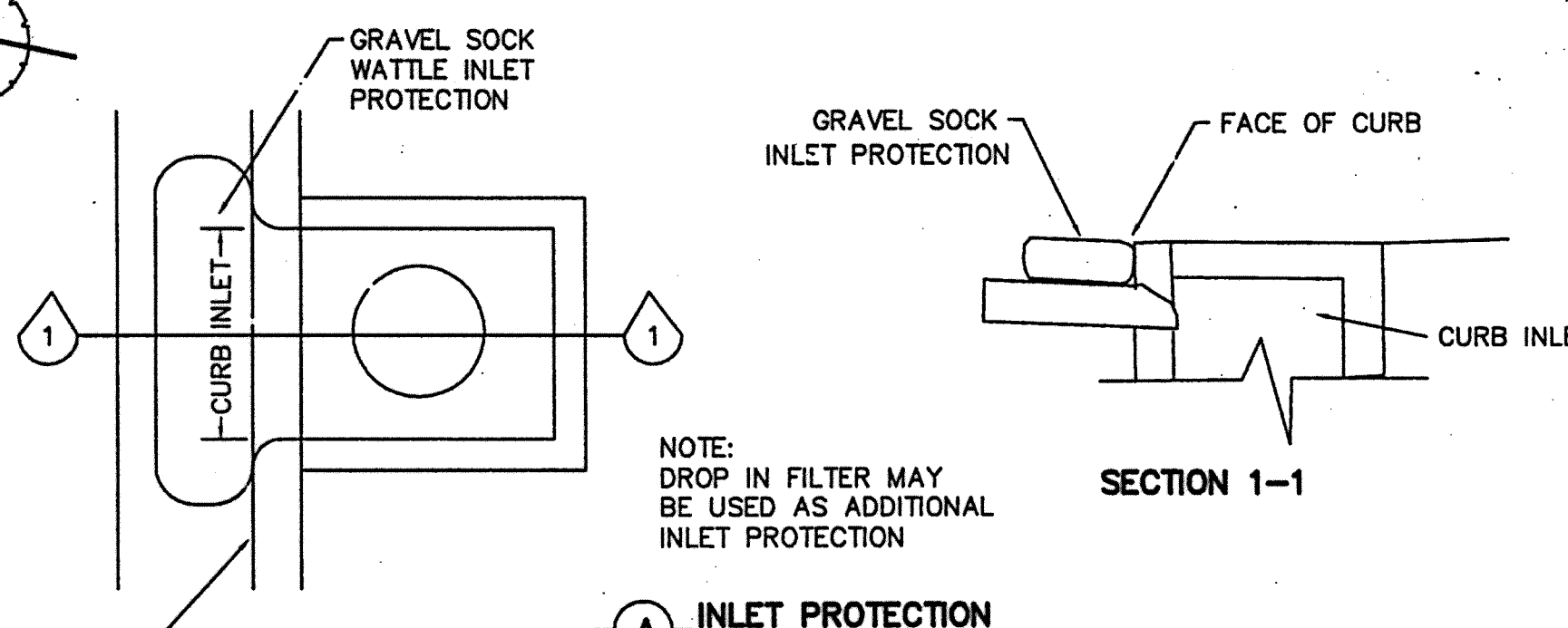
- NOTES**
- INSPECT AND REPAIR FENCE AFTER EACH STORM. AND REMOVE SEDIMENT WHEN NECESSARY.
 - REMOVED SEDIMENT SHALL BE PLACED IN AREA TO BE FARMED.
 - SILT FENCE SHALL BE PLACED FOR MAX. EFFICIENCY.



C SILT FENCE DETAIL
N.T.S.



B FIBER ROLL WATTLE
N.T.S.



A INLET PROTECTION
N.T.S.

- LEGEND**
- SILT FENCE SEE DETAIL C
 - FIBER ROLL PROTECTION SEE DETAIL B
 - ⊙ INLET PROTECTION SEE DETAIL A

- NOTES:**
- BASIS OF ELEVATION TBM ELEV. 494.05 AT TOP OF STORMDRAIN MANHOLE STA 9+80.03
 - THE LOCATION OF UNDERGROUND UTILITIES SHOWN HEREON HAS BEEN DETERMINED FROM SURFACE EVIDENCE OF THEIR EXISTENCE OR FROM INFORMATION OBTAINED FROM THE UTILITY COMPANIES. EDS ENGINEERING & LAND SURVEYING ACCEPTS NO LIABILITY FOR THE EXISTENCE OR NONEXISTENCE OF UTILITY LINES. CONTRACTORS AND OTHERS USING THIS PLAN SHALL CONFIRM THE LOCATION OF UNDERGROUND LINES OR STRUCTURES, PRIOR TO BEGINNING ANY EXCAVATION CALL USA AT 1-800-227-2800 48 HOURS IN ADVANCE OF BEGINNING ANY EXCAVATION.
 - DUST CONTROL SHALL BE STRICTLY ADHERED TO. DUST CONTROL SHALL CONFORM TO SECTION 7-81 OF THE STANDARD SPECIFICATIONS FOR PUBLIC WORKS CONSTRUCTION, LATEST EDITION.

WET WEATHER PLAN

SHASTA COMMUNITY HEALTH CENTER
PARKING LOT IMPROVEMENT EROSION CONTROL PLAN

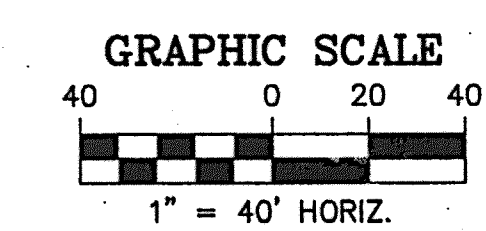
CONSTRUCTION SCOPE CONSTRUCTION OF PARKING LOT APPROX. 1/2 ACRE IN SIZE ON ADJACENT VACANT LOT OWNED BY SHASTA COMMUNITY HEALTH CENTER THIS PROJECT WILL REQUIRE 128 CYDS. OF EXCAVATION AND 45 CYDS. OF EMBANKMENT AS SHOWN ON THE ATTACHED IMPROVEMENT PLANS.

EROSION CONTROL DURING CONSTRUCTION, IF A 30% CHANCE OF RAIN AS PREDICTED BY THE NATIONAL WEATHER SERVICE WORK SHALL BE WEATHER FROOFED AND SUSPENDED IF RAIN OCCURS, THE EROSION CONTROL SHALL BE MAINTAINED TO A FUNCTIONING MANOR.

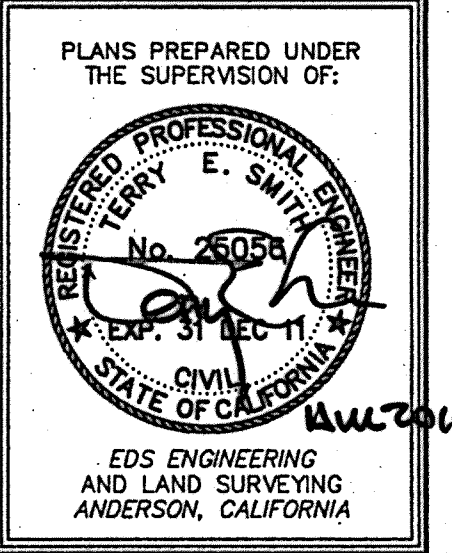
- AT THE START OF CONSTRUCTION SEDIMENT AND EROSION CONTROL SHALL BE IN PLACE AND FUNCTIONING.
- NOTES: WET WEATHER PLAN / INTERMITTENT STORMS**
- ALL STRAW BALE BARRIERS, SILT FENCES AND SEDIMENT TRAPS SHALL BE IN PLACE AND IN A FUNCTIONING ORDER.
 - ALL DENUDED AREAS OF THE PROJECT SHALL BE STRAW MULCHED OR HYDROSEEDED PER THE PLANS.
 - ANY STOCKPILED OR LOOSE MATERIAL SHALL BE PLACED AND COMPACTED ALL FILL SLOPES SHALL BE TRACKWALKED TO SEAL THE SURFACE.
 - BI-ANNUALLY FOR A PERIOD OF 2 YEARS THE SITE SHALL BE REVIEWED AND IF VEGETATION IS NOT ESTABLISHED AND SEVERE EROSION IS EXPECTED TO CONTINUE SLOPES SHALL BE RESEDED. BEFORE RESEEDING STARTS ERODED SLOPES SHALL BE SMOOTHED OVER INCLUDING FILLING OF ERODED AREAS. THE RESEEDING SHALL FOLLOW THE PLANS AND SPECIFICATIONS.
 - SEDIMENT REMOVED FROM EROSION CONTROL FACILITIES SHALL BE REMOVED FROM THE SITE AND DISPOSED OF IN A LAND FILL OR BLENDED WITH NATIVE MATERIAL AND PLACED WITHIN PROJECT FILLS.

- SCHEDULE OF CONSTRUCTION**
- EROSION CONTROL INSTALLATION FEBRUARY 4-10
 - GRUBBING AND GRADING FEBRUARY 10-18
 - CONCRETE PLACEMENT FEBRUARY 18-28
 - FINAL EROSION CONTROL MEASURES, MARCH 1-10 EROSION CONTROL MAINTENANCE AND MONITORING 4 MONTH PERIOD REVIEW SITE WEEKLY APPROXIMATELY 1 HRS PER VISIT @ \$60 HR UNTIL WET WEATHER SEASON IS OVER MAY 2011 1 HRS. X 15 PER YEAR = \$900.00 EROSION REPAIR 30% +/- (0.10 AC.) AT \$1200 AC = \$120.00 SEDIMENT MAINTENANCE LABORER 1 HRS @ \$60 HR = \$60 15 VISITS @ \$60 PER VISIT = \$900 TOTAL MAINTENANCE = SAY \$ 2,000 ESTIMATE

NOTICE NOT LESS THAN 48-HOUR NOTICE IS REQUIRED PRIOR TO STARTING ANY EXCAVATION NEAR UNDERGROUND UTILITIES BELONGING TO P.G. & E., PAC BELL, A.C.I.D. CHARTER COMMUNICATIONS, CITY OF REDDING, PLEASE CALL, TOLL FREE, "ONE CALL" UNDERGROUND SERVICE ALERT (USA) 1-800-227-2600. FOR A.C.I.D. FACILITIES, CALL (530)365-7329, FOR CSA #17 (530)225-5771, CHARTER COMM (530)241-4243



EDS ENGINEERING & LAND SURVEYING
2730 VENTURA St. suite d
ANDERSON CA 96007
PHONE 530-378-1125



CITY OF REDDING
IMPROVEMENT PLANS

EROSION CONTROL PLAN OF THE
SITE PARKING & DRAINAGE PLANS
FOR
SHASTA COMMUNITY HEALTH
CENTER 1035 PLACER STREET

SCALE: 1" = 40' HORIZ.
P-C7.DWG
SCRIPT=EROS
DATE: 6-29-2010
09BEY\SD\BD

C7
OF 8