

LIGHT GAUGE STEEL NOTES

- LIGHT GAUGE STEEL FRAMING:
 - 16-20 GAUGE MATERIAL, 33ksi YIELD STRENGTH MIN.
 - ALL MEMBERS TO MEET THE DIMENSION REQUIREMENTS OF (E 91)
 - TYPICAL LIGHT GAUGE STEEL FRAMING DETAILS PER DETAILS "A" TO "E" ON SHEET 91
- EXTERIOR WALLS:
 - 3 5/8" x 20 GA. (UNO.) STUDS AT 24" O.C.
 - 1/2" 5/8" GYPSUM BOARD W/ 1/8" SCREWS @ 6" O.C. TO ALL STUDS AND TO TOP & BTM TRACK
 - 20 GA. (UNO.) TRACK AT TOP AND BOTTOM
 - SEE DETAILS ON 91 FOR CONNECTIONS
- SCREWS:
 - LIGHT GAUGE STEEL TO LIGHT GAUGE STEEL USE #10-16 x 3/4" SELF-DRILLING SCREWS, UNO. (eg. HILTI KUJK-PRO S-MD 10-16x3/4 HUH 5)
 - LIGHT GAUGE STEEL TO STEEL (1/8" TO 3/8" THICK) USE #12-24 x 1" SELF-DRILLING SCREWS (eg. HILTI KUJK-PRO S-MD 12-24 x 1 1/4 HUH 5)
 - PLYWOOD TO LIGHT GAUGE STEEL USE #10-24 x 1 1/2" WAFER-HEAD SCREWS (eg. HILTI KUJK-PRO S-UD 10-24 x 1 1/2 FUH 15)
 - GYPSUM BOARD TO LIGHT GAUGE STEEL USE 1/2" x 1" SELF-DRILLING BUGLE HEAD SCREWS (eg. HILTI KUJK-PRO 6 x 1 FBH 5D)

Ronald Beyer
Architect



Lakeside Plaza
2515 Park Marina Drive
Suite 205

Post Box 1154
Redding, Ca 96099

530 241 7067

Photovoltaic Panel
Structure and
Parking Addition

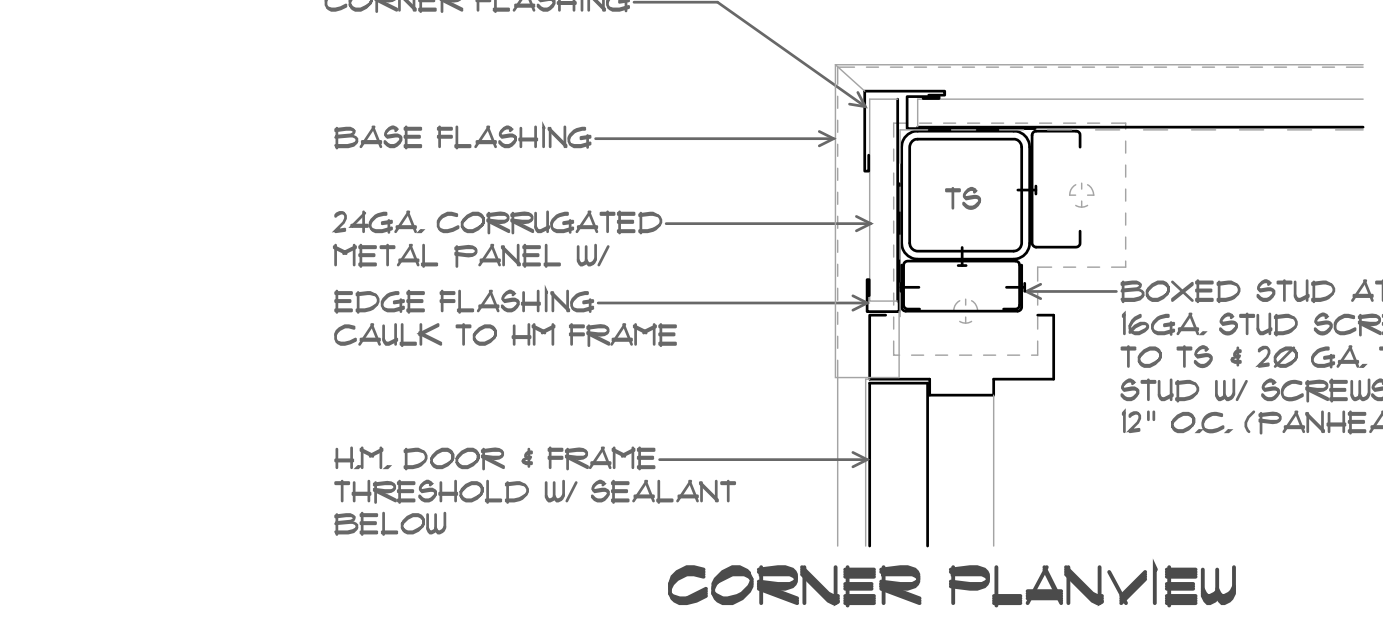
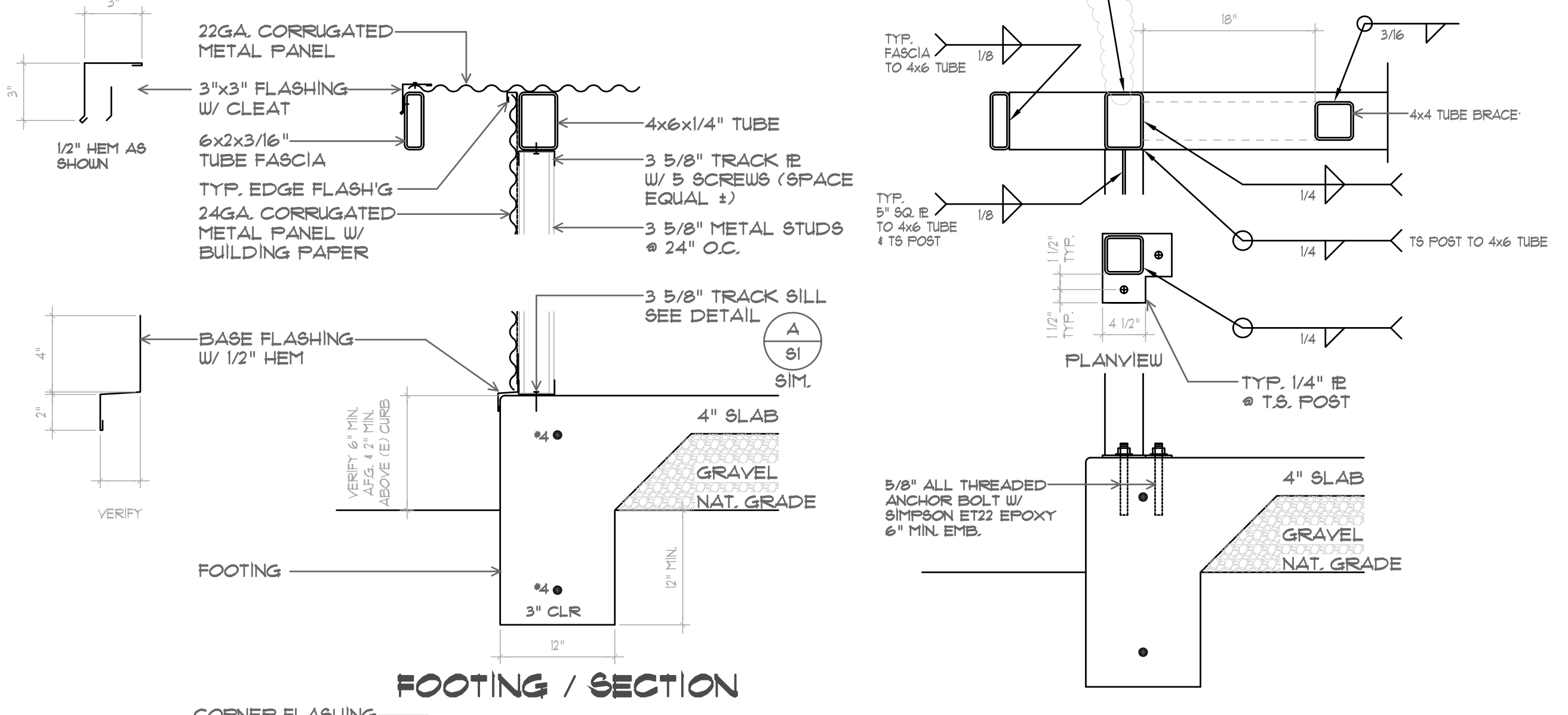
for The

Shasta
Community
Health
Center

Located at

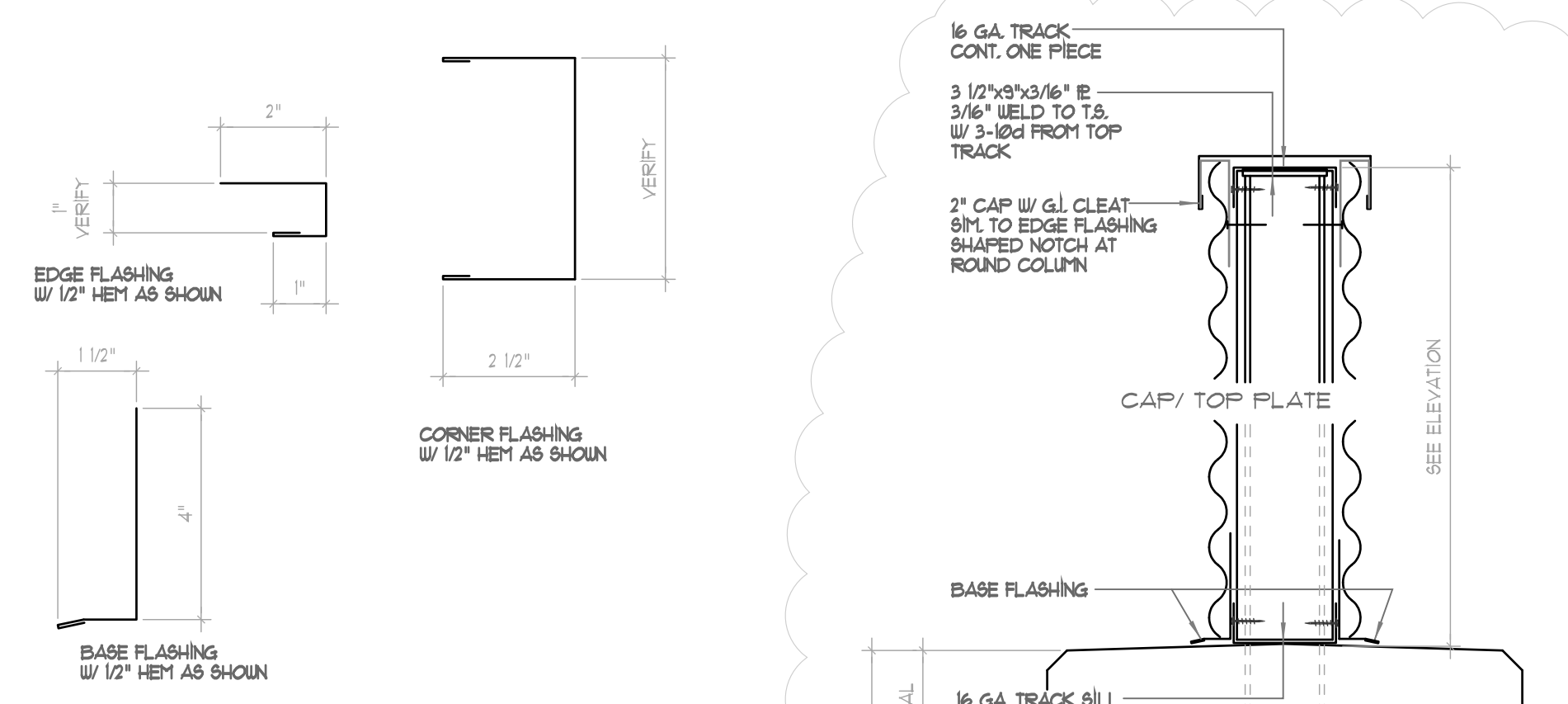
1035 Placer Street
Redding, Ca

2 8'x7' EQUIPMENT ENCLOSURE
S4.1 SCALE: 1/4"=1'-0"

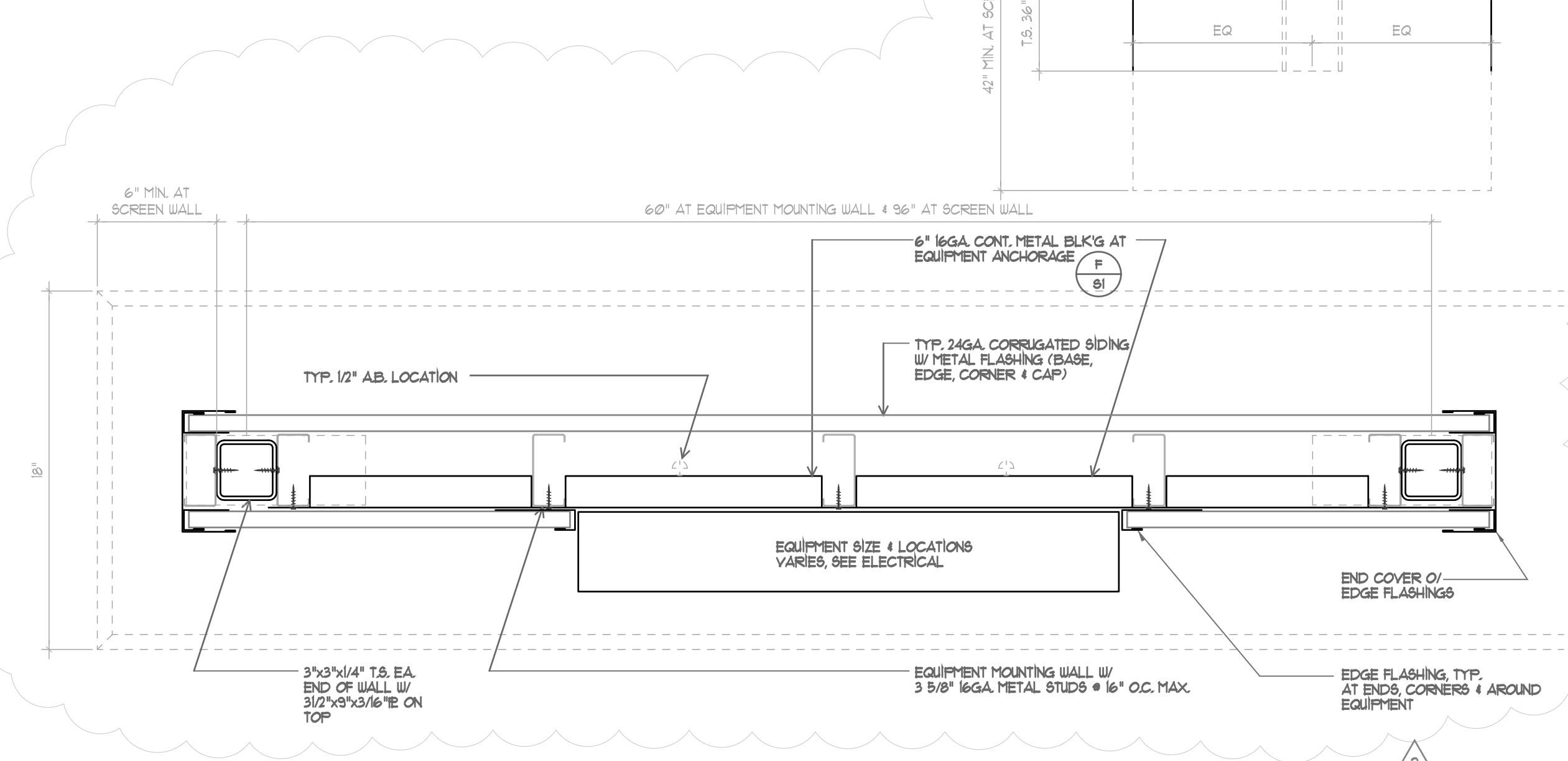


3 DETAILS
S4.1 NO SCALE

* ALL FLASHING: 24GA. PRE-FINISHED SHEET METAL TO MATCH METAL SIDING FINISH



* ALL FLASHING: 24GA. PRE-FINISHED SHEET METAL TO MATCH METAL SIDING FINISH



1 EQUIPMENT MOUNTING WALL AND SCREEN WALL
S4.1 NO SCALE

06 JULY 2010
19 MAR 2010
23 DEC 2009
MISC. DETAILS

S4.1



THE DESIGNS AND DRAWINGS BY RONALD BEYER, ARCHITECT IS COPYRIGHTED AS CREATED. THEY ARE PROTECTED UNDER THE 1990 ARCHITECTURAL WORKS COPYRIGHT PROTECTION ACT. THE DRAWINGS AND DESIGNS CREATED UNDER THIS AGREEMENT MAY NOT BE REPRODUCED OR USED WITHOUT THE EXPRESSED WRITTEN PERMISSION OF RONALD BEYER, ARCHITECT.